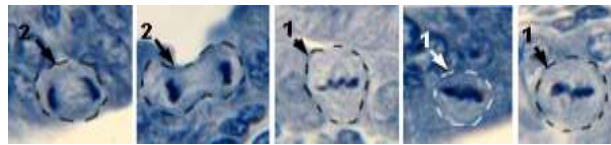
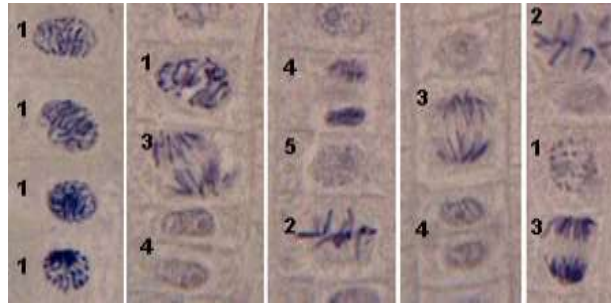
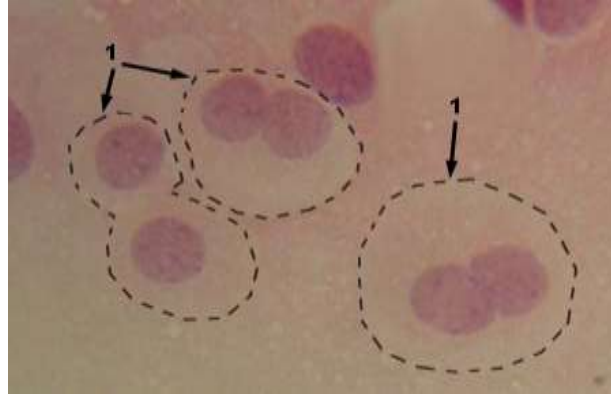


Master Degree of Histology Log Book



" كراسة الأنشطة "

اللازمة لحصول المتدرب على درجة الماجستير فى علم الانسجة و
بيولوجيا الخلية

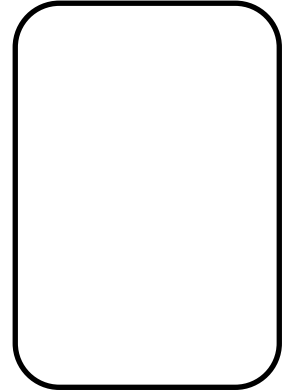
2021-2022/2022-2023

Contents

NO	SUBJECT	PAGE
1	Personal data	3
2	Instructions to the use of logbook	4
3	Program aims and curriculum structure	6
4	First Part :	7
	1. Course 1 Histology 1	8
	Unit (Module) 1 Microtechnique	
	Unit (Module) 2 Histochemistry & Cytochemistry	
	Unit (Module) 3 Cytology	
	2. Course 2	19
	General Pathology	
5	Speciality Course	26
	Course 3: Histology 2	
	Unit (Module) 1 Cytology.	
	Unit (Module) 2 General Histology.	
	Unit (Module) 3 Special Histology.	
	Unit (Module) 4 Cytogenetic	
6	Elective Course	68
7	Other Scientific Activities	71
8	Formative assessment	72
9	Master Degree Thesis pathway	73
10	Declaration:	74



Personal photo



Name.....

Date of birth.....

Address.....

Place of work.....

Telephones..... **Mobile phone(s)**.....

E mail.....

Name of lab	Period of work	Lab director signature

Academic Information

MBBCh...../...../..... University Grade

Grade of Internal Medicine course on graduation

Others...../...../..... University

...../...../..... University

*** Aim of the activities book**

To provide one source of evidence for the assessment committee that you attained the desired level of competency required to gain the award.

In this book you will document all clinical, academic and other experiences and skills you attained during your training.

Sections of the book

For each module / course / rotation

You should fill the following sections:-

1- specimens processing log

1- You will first find list with all steps of specimens processing in the concerned module and the minimum number of slides you must prepared, sectioned and stained.

2- You should record all methods of preparing of different tissues for examination by light microscope as well as those for examination by electron microscope in the module and each technique should be signed by your trainer.

2- Different stains presentation log

Record the different staining techniques that you have presented in a seminar of the activity.

3- Staining / imaging log

- 1- You will find a list for different *Staining techniques*, imaging either by light microscope or by TEM as well as by SEM. Also the level of desired performance you should achieve at the end of training.
- 2- You will find empty tables to write down the procedure, you level of participation and date and signature of supervisor.

4- Rotation / attendance proof

You should have evidence of achievement the required training hours within each module.

For the whole program fill the following sections

1- Academic activities

A- Document all academic activities e.g. lecture, journal clubs, workshops, conference, services attended. This documentation should include the level of participation " attendance, preparation, presentation,....."

2- Academic achievements

A- Document all outcomes you achieved in the field of:-

- Audit participation
- Research " processing specimens and imaging slides " participation.
- Evidence- based medicine "generation of guidelines" protocols
-

3- Formative assessment log

This document all types of formative assessment attended e.g.:-

- Mini clinical examination
- Quiseses

Program aims

1/1. To enable candidates to get sufficient Knowledge of the structure and function of the body and its major organ systems and of the molecular and cellular mechanisms.

1/2-To enables candidates to keep with international standards of histology and cell biology searcher by teaching high level of practical skills, in addition to update medical knowledge as well as stress upon applied histology.

1/3- Ensure students become proficient in the field of histopathology, and are competent to handle, prepare and are able to comment on a wide range of specimens.

1/4- To update candidates in the field of search as area of molecular biology and cytogenetic studies, and enabling the candidates of making appropriate referrals to a sub-specialist in the research point.

1/5- To introduce candidates to the basics of scientific medical research.

1/6- The acquisition of life-long habits of reading, literature searches, consultation with colleagues, attendance at scientific meetings, and the presentation of scientific work that are essential for continuing professional development (CPD).

1/7-Enable candidates to work effectively, in partnership with other health professionals, support staff and service users.

1/8 -To provide the candidates with master degree to understand and get the best of published scientific research and do their own.

Curriculum Structure:

Duration of program 36 months

Program Structure

Program Time Table

Duration of program 3 years maximally 5 years divided into

- Part 1

Program-related basic courses and ILOs + elective courses

Students are allowed to set the exams of these courses after 12 months from applying to the MSc degree.

- Thesis

For the M Sc thesis;

MSc thesis subject should be officially registered within 6 months from application to the MSc degree, Discussion and acceptance of the thesis should not be set before 12 months from registering the M Sc subject;

It could be discussed and accepted before passing the second part of examination)

- Part 2

Program –related speciality courses and ILOs

Students are not allowed to set the exams of these courses before 3 years from applying to the MSc degree.

n.b. Fulfillment of the requirements in each course as described in the template and registered in the log book is a pre-request for candidates to be assessed and undertake part 1 and part 2 examinations.



First Part

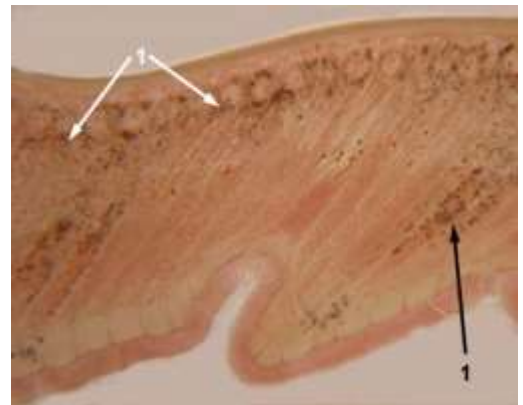
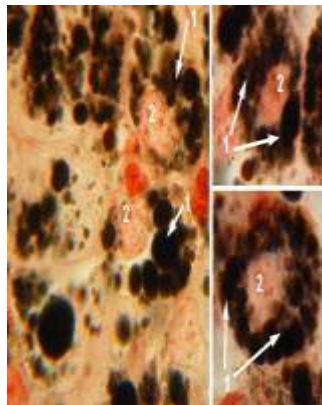
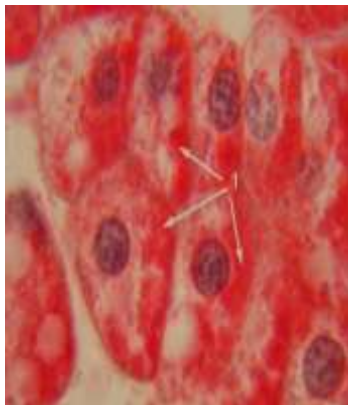
Course 1: Histology 1

- Microtechnique
- Histochemistry & Cytochemistry
- Cytology

Course 2: General Pathology

Course 1

Histology 1



Requirements

- **Credit points:** 5 point credit for didactic (lectures, seminars, tutorial) and 6 point for training.
 - Minimal rate of attendance 80% of didactic and training

5 credit points for didactic

Name of the course	Credit points	Responsible department	Attendance	Percentage of Achieved points
Course 1 Histology 1 Unit 1 Microtechnique	0.5	Histology and cell biology department	5 hours -Fixation of tissues -Basic Methods of study in Histology	10%
Unit 2 Histochemistry & Cytochemistry	0.5		5 hours -Theory and practice of staining -Structure of dyes used in Histology	10%
	0.5		5 hours -Principles of light and electron microscopies Cytochemical methods, their nature, types and limitations - Cytochemistry and histochemistry of protein, nucleic acid and nucleoproteins - Carbohydrate and mucosubstance - Lipids	10%
	0.5		5 hours Enzyme histochemistry Immunohistochemistry	10%
	0.5		5 hours - techniques of Autoradiography - Some special histochemical methods	10%



كلية الطب

Histology Department
Faculty of Medicine

Name of the course	Credit points	Responsible department	Attendance	Percentage of Achieved points
Unit 3 Cytology	1		10 Hours -Cell membrane -nucleus	20%
	1		10 hours Cytoplasm -Membranous organelles -Non membranous organelles -Cell inclusions -Cytoplasmic matrix	20%
	0.5		5 hours - Cell activities - Cell cycle -Cell development	10%
Student signature			Principle coordinator Signature	Head of the department signature

Microtechnique (Lectures)

Date	Attendance	Topic	Signature

Cytology (Lectures)

Date	Attendance	Topic	Signature

6 credit points for training

Clinical training	Credit points	Responsible department	Attendance	Percentage of Achieved points
Training in Histology Department	1	Histology	30 hours (1 week) Practice in the histology laboratory for at least 5 days/week for 1 week on the Laboratory aspects of Tissue processing for light & electron microscopes.	16.6%
	1		30 hours (1 week) Practice in the histology laboratory for at least 5 days/week for 1 week on the Laboratory aspects of Sectioning At least 30 paraffin blocks	16.6%
	1.5		45 hours (1.5 week) Practice in the histology laboratory for at least 5 days/week for 1.5 week on the Laboratory aspects of -Staining : At least 30 specimens (General stain & specific stains) - Imaging at least 30 slides	25%
	1.5		45 hours (1.5 week) Practice in the histology laboratory for at least 5 days/week for 1.5 week on the Laboratory aspects of Making different types of Histochemical stains	25%
	1		30 hours (1 week) Practice in the histology laboratory for at least 5 days/week for 1 week on the Laboratory aspects of Identification of Immunohistochemical staining techniques	16.6%
Student signature			Principle coordinator Signature	Head of the department signature



كلية الطب

Histology Department
Faculty of Medicine

A-Specimen Processing log

NO.	Processing of specimens	Level of participation *	Location	Signature of supervisor

- * Level of participation
A- Plan and carry out
B- Carry out
C- Carry out under supervision

A- Specimens processing log

NO.	Processing of specimens	Level of participation *	Location	Signature of supervisor

- * Level of participation
- A- Plan and carry out
 - B- Carry out
 - C- Carry out under supervision

Course 2

General Pathology

Requirements

- **Credit points:** 3 point credit for didactic (lectures, seminars, tutorial) and 4 point for training.
 - **Minimal rate of attendance 80% of didactic and training**

3 credit point for didactic

Name of the course	Credit points	Responsible department	Attendance	Percentage of Achieved points
General Pathology	1.25	Pathology Department	12.5 Hours Inflammation and Repair -General features of inflammation -Acute inflammation & its types -Chronic inflammation -Systemic effects of inflammation -Types and mechanisms of repair	41.6%
	1.25		12.5 hours Cellular adaptation, cell injury and cell death -Cell response to injury -Cellular adaptation of growth and differentiation -Causes and mechanism of cell injury -Apoptosis-Necrosis -Intracellular accumulation	41.6%
	0.5		5 hours Tumors (Neoplasia) -Definition-Nomenclature -Biology of tumor growth -Molecular basis of cancer -Carcinogenesis -Clinical features of tumors	16.6%
Student signature			Principle coordinator Signature	Head of the department signature



كلية الطب

Histology Department
Faculty of Medicine

General Pathology (Lectures)

Date	Attendance	Topic	Signature

4 credit points for training

Clinical training	Credit points	Responsible department	Attendance	Percentage of Achieved points
Training in Pathology Department	2	Pathology Department	60 hours (2 weeks) Practice in the pathology laboratory for at least 5 days/week for 2 weeks on the Laboratory aspects of the Fixation preparation, cutting and staining of -Acute suppurative appendicitis -Chronic inflammation -Bilharziasis in colon -Caseating T.B in L.N	50%
	1.5		45 hours (1.5 week) Practice in the pathology laboratory for at least 5 days/week for 1.5 weeks on the Laboratory aspects of the Fixation preparation, cutting and staining of -cellular accumulation -Fatty change in liver Hyalinosis in spleen -Apoptosis-Necrosis	37.5%
	0.5		15 hours (0.5 week) Practice in the pathology laboratory for at least 5 days/week for 0.5 week in the Laboratory aspects of the Fixation preparation, cutting and staining of tumors Benign : Fibroadenoma in breast Malignant: Adenocarcinoma and duct carcinoma	12.5%
Student signature			Principle coordinator Signature	Head of the department signature

A- Specimens processing log

NO.	Processing of specimens	Level of participation *	Location	Signature of supervisor

* Level of participation
A- Plan and carry out
B- Carry out
C- Carry out under supervision



B- Different stains presentation log

NO.	Diagnosis of Stain	Level of participation *	Location	Signature of supervisor

* Level of participation
A- Plan and carry out
B- Carry out
C- Carry out under supervision

C- Procedure log

NO.	Level of competency*	Location	Signature

* Level of competency
A- Independent performance
B- Performance under supervision
C- Observed

Course 3 Histology 2

Requirements

● Credit points:

First part: 20 point for training

Second part: 24 credit point for didactic (lectures, seminars, tutorial) and 96 point for training.

- Minimal rate of attendance 80% of training and didactic

Units' Titles' list	% from total Marks	Level (Year)	Core Credit points		
			Didactic	training	Total
1-Unit 1 Cytology	16.6%	2	4	16	20
2-Unit 2 General Histology	25%	2	6	24	30
3-Unit 3 Special Histology	41.6%	2,3	10	40	50
4-Unit 4 Cytogenetics	16.6%	3	4	16	20
			24	96	120

Year 1

(20 credit point for training)

Clinical training	Credit points	Responsible department	Attendance	Percentage of Achieved points
Training in the Histology Laboratory	3	Histology department	<ul style="list-style-type: none"> ➤ Training in the Histology lab on laboratory aspects of the Fixation preparation, cutting and staining of histological sections ➤ 2 days / week for 7 weeks 	15%
	3		<ul style="list-style-type: none"> ➤ Sectioning in the Histology lab for at least 2 days /week for 7 weeks 	15%
	2	Histology department	<ul style="list-style-type: none"> ➤ Performance of different Histological stains 2 days/week for 5 weeks 	10%
	2		<ul style="list-style-type: none"> ➤ Identification of laboratory slides 	10%
	6		<ul style="list-style-type: none"> ➤ Training on student teaching ➤ Attendance of at least 6 sections/ week for 12 weeks with senior colleagues 	30%
	3		<ul style="list-style-type: none"> ➤ Drawing of histological diagrams supervised by staff members of Histology At least 3 hours/week for 24 weeks 	15%
	1		<ul style="list-style-type: none"> ➤ Formative assessment 	5%
Student signature			Principle coordinator Signature	Head of the department signature



A-Specimens processing log book

NO.	Processing of specimens	Level of participation *	Location	Signature of supervisor

* Level of participation
 A- Plan and carry out
 B- Carry out
 C- Carry out under supervision

B- Student teaching

Date	Title of lecture	Signature of Staff member



كلية الطب

**Histology Department
Faculty of Medicine**

B- Practical Teaching

Date	Title of lecture	Signature of Staff member

C- Procedures log book

NO.	Level of competency*	Location	Signature

* Level of competency
A- Independent performance
B- Performance under supervision
C- Observed

Year 2

Requirement

- 12 credit points for didactic, 48 credit points for training
- Minimal rate of attendance is 80% of training and didactic

(4 credit point for didactic in Unit 1)

Name of the course	Credit points	Responsible department	Attendance	Percentage of Achieved points
Course3 Histology 2 Unit 1 Cytology	0.5	Histology	5 hours Cell membrane	12.5%
	0.5		5 hours Nucleus	12.5%
	1.5		15 hours Cytoplasm	37.5%
	0.25		2.5 hours Cell inclusions	6.25%
	0.5		5 hours Cell Activities & Cell cycle	12.5%
	0.5		Seminars Attendance of at least 50% of seminars At least seminar/week for 3 weeks	12.5%
	0.25		Formative assessment	6.25%
	Student signature			

(8 credit point for didactic in Unit 2&3)

Name of the course	Credit points	Responsible department	Attendance	Percentage of Achieved points
Course 3 Histology 2 Unit 2 General Histology Unit 3 Special Histology	0.75	Histology Department	7.5 hours Epithelial tissue	9.3%
	1.5		15 hours Connective tissue proper Cartilage&bone	18.75%
	1		10 hours Blood Haemopoisis	12.5%
	0.75		10 hours Muscular Tissue	9.3%
	1		10 hours Nervous tissue	12.5%
	1		10 hours Blood vascular system	12.5%
	1		10 hours Lymphatic system	12.5%
	0.5		Seminars Attendance of at least 50% of seminars At least seminar/week for 3 weeks Presentation of at least one seminar	6.25%
	0.5		Formative assessment	6.25%
	Student signature			

(48 credit point for training in year 2)

Clinical training	Credit points	Responsible department	Attendance	Percentage of Achieved points
Training in Histology Department	8	Histology Department	Perform different types of laboratory slides for students 2 days/week for 24 weeks At least 150 slides	16.6%
	3		Identification of TEM&SEM cases 2 days/week for 9 weeks	6.25%
	8		Student teaching Attendance of at least 4 sections/ week for 30 weeks	16.6%
	3		Drawing of histological diagrams supervised by staff members of Histology At least 3 hours/week for 30 weeks	6.5 %
	6		Attendance of immunohistochemistry lab for at least 1 day/week for 36 weeks	12.5%
Student signating			Principle coordinator Signature	Head of the department signature



كلية الطب

**Histology Department
Faculty of Medicine**

Clinical training	Credit points	Responsible department	Attendance	Percentage of Achieved points
Training in Histology laboratory	3	Histology Department	90 Hours (3weeks) Slide Examination of the epithelial tissue	6.25%
	5		150 Hours(5weeks) Slide Examination of the Connective tissue	10.5%
	3		90 Hours (3weeks) Slide Examination of the Haemopirotic tissue	6.25%
	3		90 Hours (3week) Slide Examination of the Muscular tissue	6.25%
	3		90 Hours (3week) Slide Examination of the Nervous tissue	6.25%
	3		Formative assessment	6.25%
Student signature			Principle coordinator Signature	Head of the department signature



A-Specimens processing log book

NO.	Processing of specimens	Level of participation *	Location	Signature of supervisor

* Level of participation
 A- Plan and carry out
 B- Carry out
 C- Carry out under supervision



B- Second: Seminars presentation

Date	Staff group*	Topic	Signature

- *Staff group
- A- Group A
- B- Group B
- C- Group C



Post graduate teaching
First: lectures

Date	Title of lecture	Signature of Staff member



Post graduate teaching
Third: practical Teaching

Date	Title of lecture	Signature of Staff member



كلية الطب

Histology Department
Faculty of Medicine

Post graduate teaching
Third: practical Teaching

Date	Title of lecture	Signature of Staff member



كلية الطب

Histology Department
Faculty of Medicine

Student teaching

Date	Title of lecture	Signature of Staff member

C- Procedures log book

NO.	Level of competency*	Location	Signature

- * Level of competency
A- Independent performance
B- Performance under supervision
C- Observed



Year 3

Requirement

- **12 credit points for didactic, 48 credit points for training**
 - **Minimal rate of attendance is 80%**

(12 credit point for didactic)

8 credit point for didactic for Unit 3

Name of the course	Credit points	Responsible department	Attendance	Percentage of Achieved points
Course 3 Histology 2 Unit 3 Special Histology	8	Histology	Year 3	
	0.75		7.5 hours Skin	9.3%
	1.5		15 hours Digestive system	18.75%
	0.75		7.5 hours Respiratory system	9.3%
	0.75		7.5 hours Endocrine glands	9.3%
	0.75		7.5 hours Urinary system	9.3%
	0.75		7.5 hours Male Genital system	9.3%
	0.75		7.5 hours Female Genital system	9.3%
	1		10 hours Eye-Ear	12.5%
	0.5		Seminars Attendance of at least 50% of seminars At least seminar/week for 3 weeks Presentation of at least one seminar	6.25%
			0.5	
Student signature			Principle coordinator Signature	Head of the department signature

4 credit point for didactic for Unit 4

Name of the course	Credit points	Responsible department	Attendance	Percentage of Achieved points
Course 3 Histology 2 Unit 4 Cytogenetics	4	Department of Genetics Faculty of Agriculture	Year 3	
	0.5		5 hours Mitosis&Miosis Cell cycle	12.5%
	0.5		5 hours Human chromosomes and Karyotypes	12.5%
	0.5		5 hours Banding Methods Q,G,C,R and N	12.5%
	0.5		5 hours Structural chromosomal aberrations	12.5%
	0.5		5 hours Numerical chromosomal aberrations	12.5%
	0.5		5 hours Human Genome	12.5%
	0.3		3 hours Molecular cytogenetics	7.5%
	0.2		2 hours Cytogenetics of Pregnancy	5%
	0.5		5 hours Human cytogenic pathology	12.5%
Student signature			Principle coordinator Signature	Head of the department signature

(48 credit point for training in year 3)

Clinical training	Credit points	Responsible department	Attendance	Percentage of Achieved points
Training at histology laboratories	1.5	Histology	45 hours (1.5 week) ➤ Slide examination of vascular system	4.6%
	2		60 hours (2 week) ➤ Slide examination of lymphatic system	6.25%
	1.5		45 hours (1.5 week) ➤ Slide examination of Endocrine system	4.6%
	1		30 hours (1 week) ➤ Slide examination of skin	3%
	5		150 hours (5 week) ➤ Slide examination of Digestive system	15.5%
	1.5		45 hours (1.5 week) ➤ Slide examination of Respiratory system	4.6%
	1.5		45 hours (1.5 week) ➤ Slide examination of Urinary system	4.6%
	2		60 hours (2 week) ➤ Slide examination of Male Genital system	6.25%
	2		60 hours (1 week) ➤ Slide examination of Female Genital system	6.25%
	1		30 hours (1 week) ➤ Slide examination of Eye	3%
	1		30 hours (1 week) ➤ Slide examination of Ear	3%
Student signature			Principle coordinator Signature	Head of the department signature



كلية الطب

**Histology Department
Faculty of Medicine**

Clinical training	Credit points	Responsible department	Attendance	Percentage of Achieved points
Training at histology laboratories	4	Histology	➤ Preparation of students slides before sections 2days/ weeks for 10 weeks.	12.5 %
	3		➤ Drawing of histological diagrams supervised by staff members of Histology At least 3 hours/week for 24 weeks	9.3 %
	2		➤ Attendance of Immunohistochemistry lab for 1 day/week for 10 weeks	6.25%
	3		➤ Formative Assessment	9.3%
Student signature			Principle coordinator Signature	Head of the department signature



كلية الطب

**Histology Department
Faculty of Medicine**

Clinical training	Credit points	Responsible department	Attendance	Percentage of Achieved points
Training at genetic laboratories	2.5	Department of genetics Faculty of agriculture	➤ Preparation of mitotic chromosomes from Human lymphocytes	15.6%
	3		➤ Karyotyping	18.7%
	2.5		➤ Preparation of mitotic chromosomes from bone marrow: short term culture	15.6 %
	2		➤ Cytogenetics of meiotic cells.Preparation of human spermatozoa	12.5%
	2		➤ Sex chromosome staining: staining of xchromatin (Barr body),staining of Y chromatin (Y body)	12.5%
	2		➤ Chromosome banding techniques: Giemsa staining, C- banding.	12.5%
	2		➤ Numerical and structural aberrations (preparation from irradiated cells)	12.5%
Student signature			Principle coordinator Signature	Head of the department signature



A-Specimens processing log book

NO.	Processing of specimens	Level of participation *	Location	Signature of supervisor

- * Level of participation
A- Plan and carry out
B- Carry out
C- Carry out under supervision

B- Seminars log

First: Attendance

Date	Attendance	Topic	Signature



كلية الطب

Histology Department
Faculty of Medicine

**Post graduate teaching
First: lectures**

Date	Title of lecture	Signature of Staff member



**Post graduate teaching
Second: Tutorial**

Date	Title of Tutorial	Signature of Staff member



**Post graduate teaching
Second: Tutorial**

Date	Title of Tutorial	Signature of Staff member



كلية الطب

Histology Department
Faculty of Medicine

C- Procedures log book

NO.	Level of competency*	Location	Signature

* Level of competency
A- Independent performance
B- Performance under supervision
C- Observed



Student teaching

Date	Title of lecture	Signature of Staff member

Postgraduate student's program
Rotation in training assessment


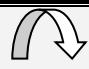

* *Name:*

* *Period of training From:*

To:

* *Site:*

***Rotation**

General skills	could not judge (0)	strongly disagree(1)	 (2) (3)		 (4) (5)		 (6)	strongly agree (7)
Perform practice-based improvement activities using a systematic methodology (share in audits and risk management activities and use logbooks).								
Appraises evidence from scientific studies.								
Conduct epidemiological studies and surveys.								
Perform data management including data entry and analysis and using information technology to manage information, access on-line medical information; and support their own education.								



General skills	could not judge (0)	strongly disagree(1)	↔		↔		(6)	strongly agree (7)
			(2)	(3)	(4)	(5)		
Facilitate learning of students other health care professionals including their evaluation and assessment.								
Maintain therapeutic and ethically sound relationship with patients.								
Elicit information using effective nonverbal, explanatory, questioning, and writing skills.								
Provide information using effective nonverbal, explanatory, questioning, and writing skills.								
Work effectively with others as a member of a health care team or other professional group.								
Demonstrate respect, compassion, and integrity; a responsiveness to the needs of patients and society.								
Demonstrate a commitment to ethical principles including provision or withholding of clinical care, confidentiality of patient information, informed consent, business practices.								



كلية الطب

**Histology Department
Faculty of Medicine**

General skills	could not judge (0)	strongly disagree(1)	↔		↔		strongly agree (7)
			(2)	(3)	(4)	(5)	
Demonstrate sensitivity and responsiveness to patients' culture, age, gender, and disabilities.							
Work effectively in relevant health care delivery settings and systems including good administrative and time management							
Practice cost-effective health care and resource allocation that does not compromise quality of care.							
Assist patients in dealing with system complexities.							

Elective Course

Requirements

● **Credit points:** 2 credit point.

- Minimal rate of attendance 80% of lectures and 80% of training

One of these courses

- Medical statistics.
- Evidence based medicine.
- Medicolegal Aspects and Ethics in Medical Practice and Scientific Research
- Quality assurance of medical education.
- Quality assurance of clinical practice.
- Hospital management



Name of the elective course:

Elective Course Lectures

Date	Attendance	Topic	Signature



كلية الطب

Histology Department
Faculty of Medicine

Academic activities

Lecture, journal club, conference, workshop

Activity	Your role **	Date	Signature of supervisor

** Your role:-
A- Attendance
B- Organization
C- Presentation



كلية الطب

Histology Department
Faculty of Medicine

Formative assessment and MCQ

Exam	Score	*Degree	Date	Signature

*Degree
A- Excellent
B- Very good
C- Good
D- Pass

الرسائل العلمية

عنوان الرسالة

عربي: _____

انجليزي: _____

المشرفون: _____

1- _____

2- _____

3- _____

4- _____

تاريخ القيد لدرجة: / / _____

تاريخ التسجيل الموضوع: _____

المتابعة الدورية: _____

التاريخ	ما تم انجازه من بروتوكول البحث	المتبقي	توقيع المشرفين



Declaration

Course Structure Mirror	Responsible (Course) Coordinator Name:	Signature	Date
First Part			
Course 1			
Unit (Module) 1			
Unit (Module) 2			
Unit (Module) 3			
Course 2			
Second Part			
Course 3			
Unit (Module) 1			
Unit (Module) 2			
Unit (Module) 3			
Unit (Module) 4			
- Elective Course (s) Certificate (s) Dates:			
- Master Degree Thesis Acceptance Date:			
- Fulfillment of required credit points prior to final examination			
Histology M Sc Degree Principle Coordinator:			
Date approved by Histology Department Council:			

يعتمد ،
رئيس القسم