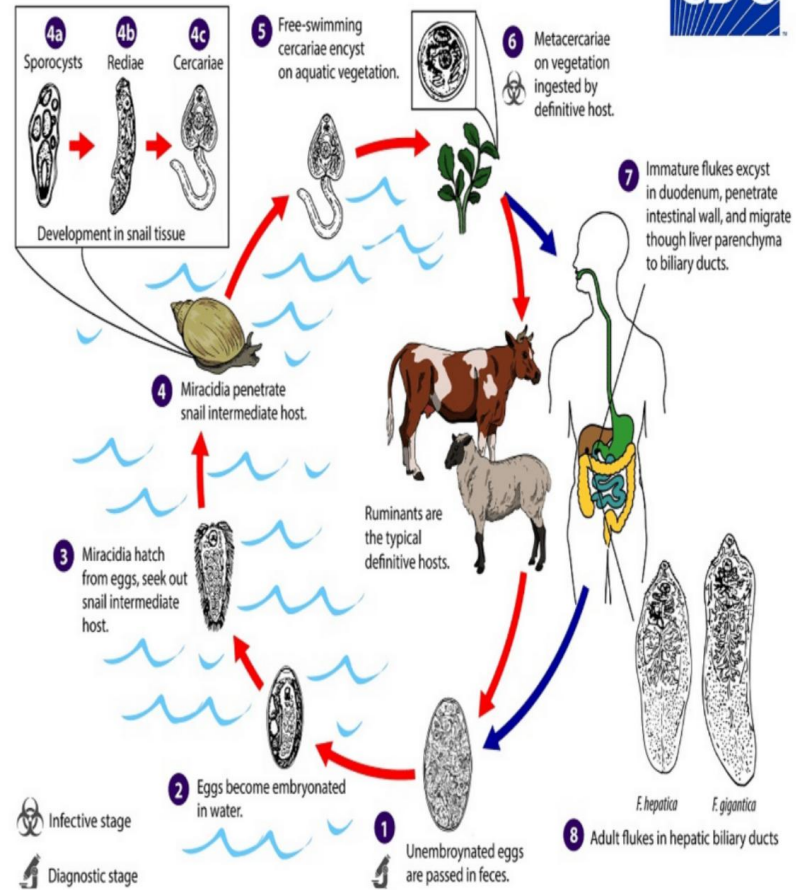


Fascioliasis



Classified as
A saprometazoonic
disease



Source of the infection

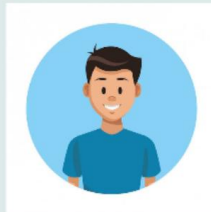
Green vegetables & watercress containing metacercaria



Is a parasitic disease primary of herbivorous animals



Secondary of man



Etiologic agent

Fasciola hepatica
Fasciola gigantica

Infected stage :
metacercaria

Transmission : **By ingestion**



Green vegetables
containing metacercaria



Water
containing metacercaria

Disease in man

Incubation period

More or less than
7 weeks



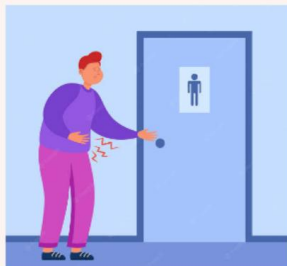
Man to man
transmission

Doesn't occur

Clinical symptoms



Abdominal rigidity



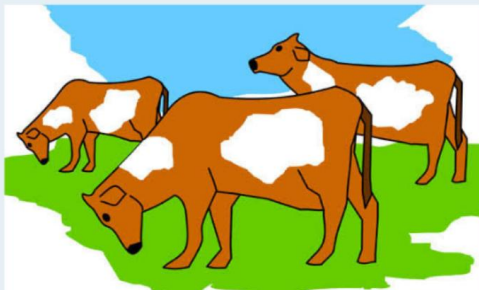
Diarrhoea



Anemia



Fever in chronic cases



Elimination & control of
the infection among
herbivorous animals

Prevention and control



Destruction of the
snails



Thorough washing of
green plants & vegetables



Treatment of the
infected patients