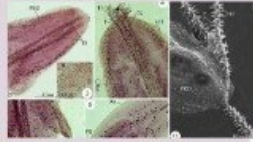


Diphyllobothriasis

It's a cyclometazoanotic disease characterized by intestinal infestation of human being as well as the fish-eating mammals with the adult worm.



Etiology .1

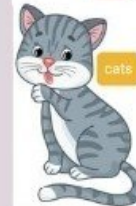
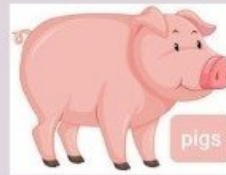
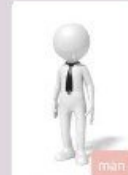
Diphyllobothrium latum
(infective stage is plerocercoid)

Source of infection .2

Fresh water fish containing the plerocercoid



Reservoir of infection .3

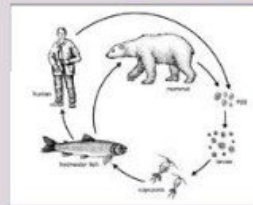


Mode of transmission .4

Ingestion of fish raw lightly salted or smoked without sufficient heat



Life cycle .5

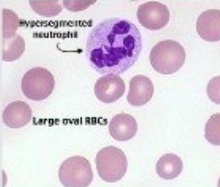


Disease in man .6

GIT Disturbance



Megaloblastic anemia



Period of communicability



.7

Prevention & Control

